



918.756.3356

briarwoodaptcommunity@gmail.com

Briarwood is Convenient to the OSU Campus

Community Amenities

- On-Site Clothes Care Center
- Picnic Areas
- Professionally Landscaped Grounds
- 24-Hour Emergency Maintenance
- We are a PET-FRIENDLY Community

*In select units

**Restrictions may apply

Apartment Features

- Spacious 1 and 2 Bedroom Interiors
- Full Size Kitchen with Black or White Appliances
- Wood Plank Flooring
- Two-Tone Paint
- Brushed Nickel Hardware
- Spacious Walk-In Closets
- Washer / Dryer Connections*

Now Leasing 1, and 2 Bedroom Apartment Homes

Professionally Managed by

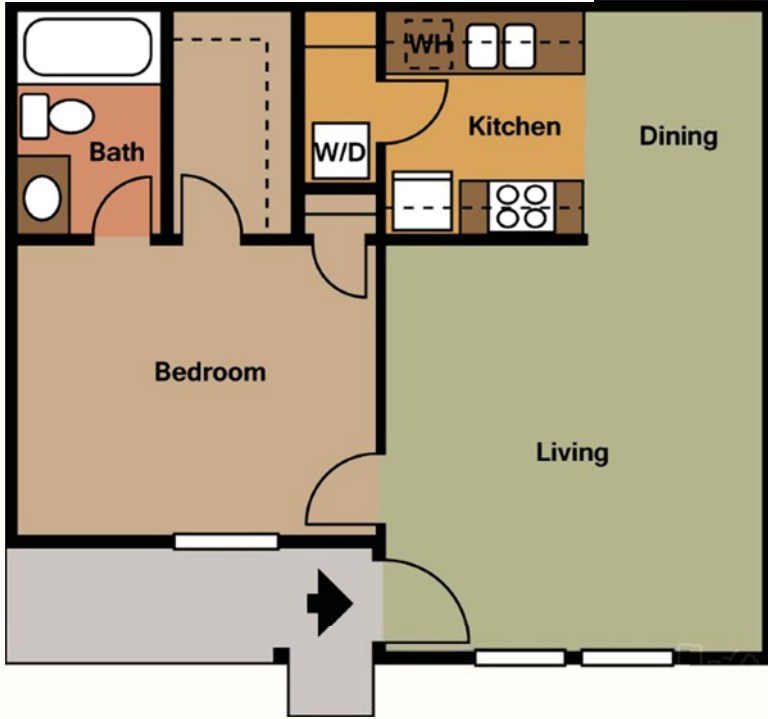


VICKERY
Development, INC.



Briarwood

Apartments of Okmulgee



1 BED/1 BATH 525 Sq. Ft.*



2 BED/2 BATH 875 Sq. Ft.*

*Approximate Square Footage Only.